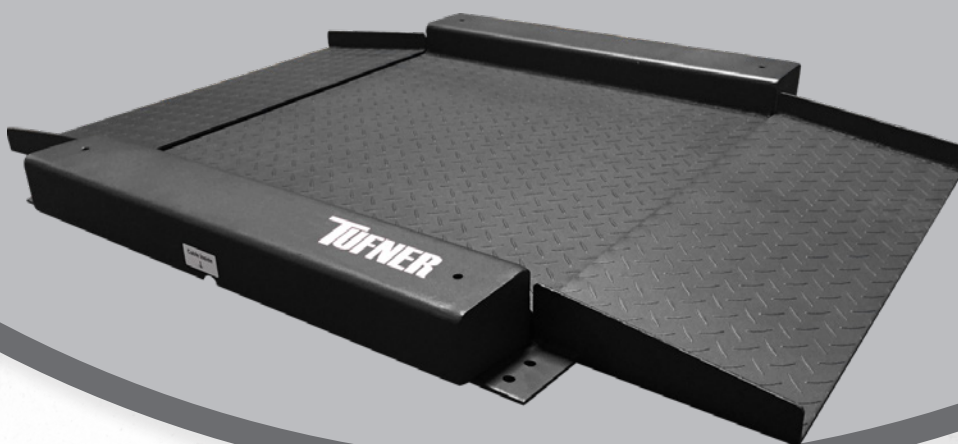


# DBS-LP LOW PROFILE DRUM/ BARREL SCALES WITH ACCESS RAMPS

**TUFNER**  
WEIGHING SYSTEMS


## FEATURES

- Powder coated steel construction with a rugged diamond safety deck for traction
- Features a spacious ultra low platform with two way, easy access ramps for easy incline ramping
- Live rails allows for weighing by placing a pallet across the rails
- Height adjustable leveling feet
- The scale fits through standard doors and can go wherever you need it for weighing drums, barrels, industrial containers and small crates
- Ultra low profile allows easy loading of heavy items
- Drum and barrel weighing, warehouse shipping & receiving, contain weighing, pallet & skid weighing, and many other industrial applications
- 20' shielded metal cable included
- Anti-corrosion, baked-on powder paint
- Factory pre-calibrated for quick setup

## OPTIONS/ACCESSORIES:

- Indicators
- Data logging software
- Label/Table printer
- Indicator stand
- Scoreboard

## SPECIFICATIONS

- **MATERIAL:** Painted Steel
- **OVERLOAD PROTECTION:** 200%
- **POWER:** AC/DC
- **CAPACITY:** 5,000 lbs
- **HEIGHT:** 1.2 in
- **RAMP LENGTH:** 12 in
- **CABLE LENGTH:** 20 ft
- **WARRANTY:** 2 year limited



## DBS-LPW

### FEATURES IN ADDITION TO STANDARD DBS-LP

- 4 casters with handles, lowering down for transportation and lifting up when weighing on 4 level feet.
- Built-in stand with handle for easy transportation
- Swivel indicator bracket for viewing in different angles

**CUSTOM SIZES AVAILABLE**

PART#	PORTABILITY	CAPACITY	PLATFORM SIZE	OVERALL SIZE	SHIP WT.
DBS-LP-13030	Stationary	1,000 lb x 0.2 lb	30" W x 30" L x 1.2" H	38" W x 54" L x 3.5" H	280 lbs
DBS-LP-53030	Stationary	5,000 lb x 1 lb	30" W x 30" L x 1.2" H	38" W x 54" L x 3.5" H	280 lbs
DBS-LP-13636	Stationary	1,000 lb x 0.2 lb	36" W x 36" L x 1.2" H	44" W x 60" L x 3.5" H	325 lbs
DBS-LP-53636	Stationary	5,000 lb x 1 lb	36" W x 36" L x 1.2" H	44" W x 60" L x 3.5" H	325 lbs
DBS-LP-14848	Stationary	1,000 lb x 0.2 lb	48" W x 48" L x 1.2" H	56" W x 72" L x 3.5" H	400 lbs
DBS-LP-54848	Stationary	5,000 lb x 1 lb	48" W x 48" L x 1.2" H	56" W x 72" L x 3.5" H	400 lbs
DBS-LPW-13030	Portable	1,000 lb x 0.2 lb	30" W x 30" L x 1.2" H	38" W x 48" L x 3.5" H	330 lbs
DBS-LPW-53030	Portable	5,000 lb x 1 lb	30" W x 30" L x 1.2" H	38" W x 48" L x 3.5" H	330 lbs

# DBS DRUM/BARREL SCALES



CARBON STEEL



STAINLESS STEEL



## EXAMPLES OF INDICATORS



IP65 PAINTED STEEL



IP65 STAINLESS STEEL



IP69K



INTRINSICALLY SAFE

## FEATURES

- Powder coated steel construction with rugged diamond tread safety plate (standard model)
- 304 stainless steel washdown construction (316 stainless steel available)
- Complete scale and indicator package
- Height adjustable leveling feet
- Features a spacious platform with two way, easy access integrated ramps
- Live rails allows for weighing by placing a pallet across the rails
- Built-in carry handles and wheels (makes it portable and easy to transport)
- The scale fits through standard doors and can go wherever you need it
- Ultra low profile allows easy loading of heavy items
- Drum and barrel weighing, warehouse shipping & receiving, container weighing, pallet & skid weighing, and many other industrial applications
- 20' shielded metal cable included
- Anti-corrosion, baked on powder paint
- Factory pre-calibrated for quick setup

## OPTIONS/ACCESSORIES:

- Indicators
- Data logging software
- Printer
- Indicator stand
- Scoreboard

## SPECIFICATIONS

- **MATERIAL:** Mild Steel or Stainless Steel
- **OVERLOAD PROTECTION:** 200%
- **POWER:** AC/DC
- **CAPACITY:** 1,000 lbs - 5,000 lbs
- **HEIGHT:** 1.5 in
- **RAMP LENGTH:** 4 in
- **CABLE LENGTH:** 20 ft
- **WARRANTY:** 2 year limited

## CUSTOM SIZES AVAILABLE

PART#	CAPACITY	PLATFORM SIZE	OVERALL SIZE	SHIP WT.
<b>STANDARD</b>				
DBS-12430	1,000 lb x 0.2 lb	24" W x 30" L x 1.5" H	32" W x 38" L x 3.5" H	240 lbs
DBS-22430	2,000 lb x 0.5 lb	24" W x 30" L x 1.5" H	32" W x 38" L x 3.5" H	240 lbs
DBS-12727	1,000 lb x 0.2 lb	27" W x 27" L x 1.5" H	35" W x 35" L x 3.5" H	240 lbs
DBS-22727	2,000 lb x 0.5 lb	27" W x 27" L x 1.5" H	35" W x 35" L x 3.5" H	240 lbs
DBS-13131*	1,000 lb x 0.2 lb	31" W x 31" L x 1.5" H	49" W x 49" L x 3.5" H	275 lbs
DBS-23131*	2,000 lb x 0.5 lb	31" W x 31" L x 1.5" H	49" W x 49" L x 3.5" H	275 lbs
DBS-13636*	1,000 lb x 0.2 lb	36" W x 36" L x 1.5" H	54" W x 54" L x 3.5" H	316 lbs
DBS-23636*	2,000 lb x 0.5 lb	36" W x 36" L x 1.5" H	54" W x 54" L x 3.5" H	316 lbs
DBS-54852*	5,000 lb x 1 lb	48" W x 52" L x 1.5" H	56" W x 60" L x 3.5" H	385 lbs
<b>STAINLESS STEEL</b>				
DBS-SS-12828	1,000 lb x 0.2 lb	28" W x 28" L x 1.5" H	36" W x 36" L x 3.5" H	265 lbs
DBS-SS-22828	2,000 lb x 0.5 lb	28" W x 28" L x 1.5" H	36" W x 36" L x 3.5" H	265 lbs

\*WHEELS AND HANDLES NOT AVAILABLE FOR THESE MODELS